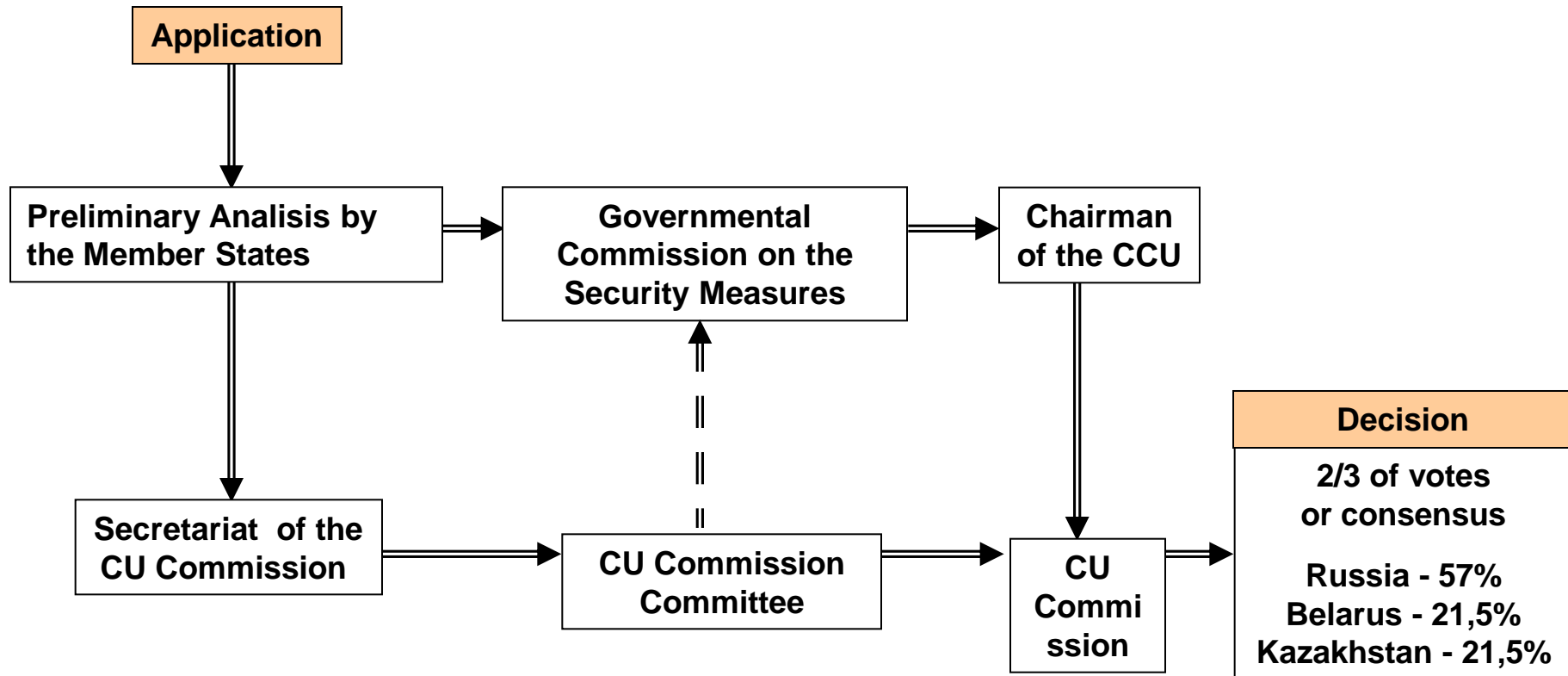


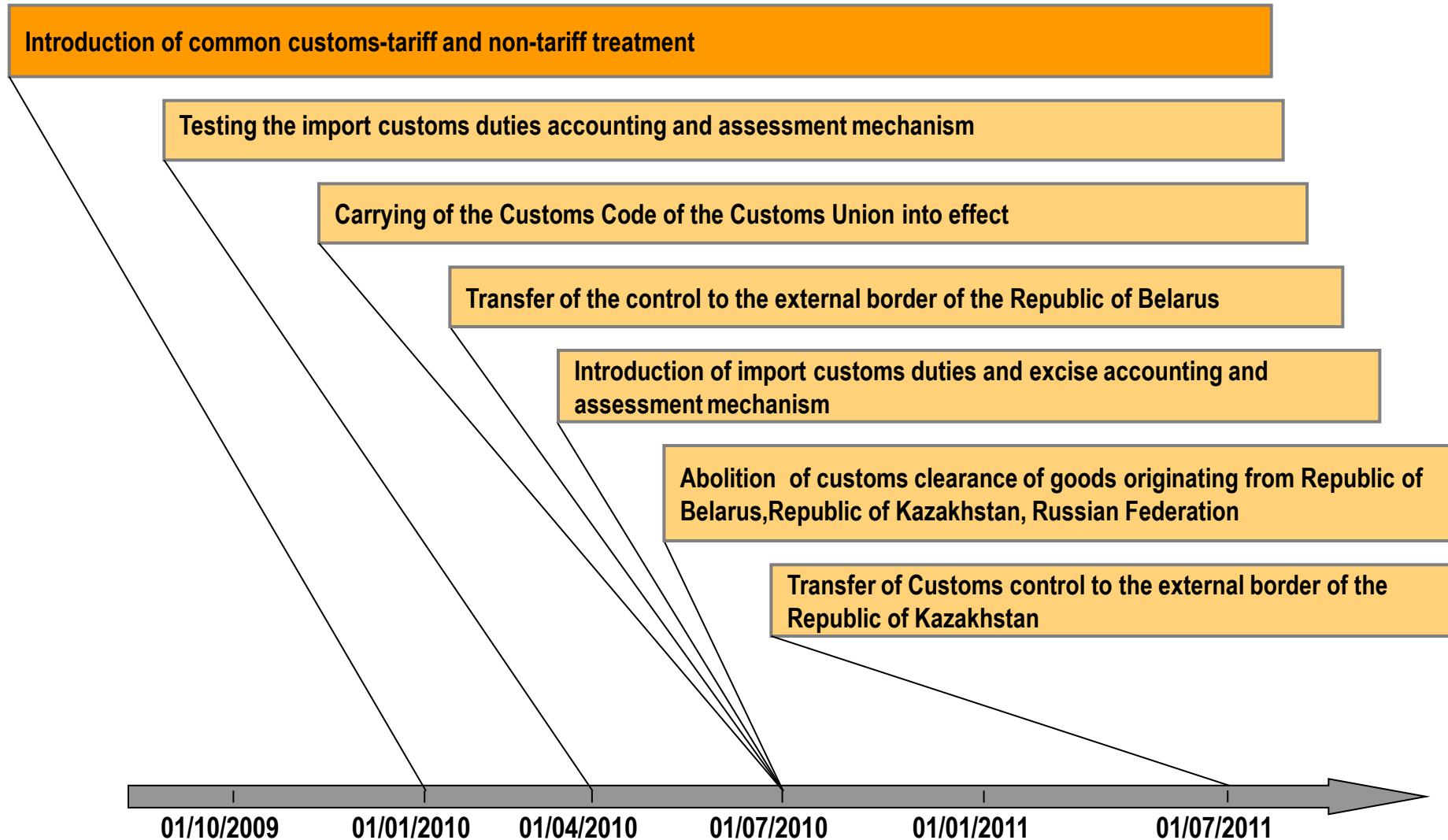
Customs Union of Belarus, Kazakhstan and Russia

25 January 2010, Brussels

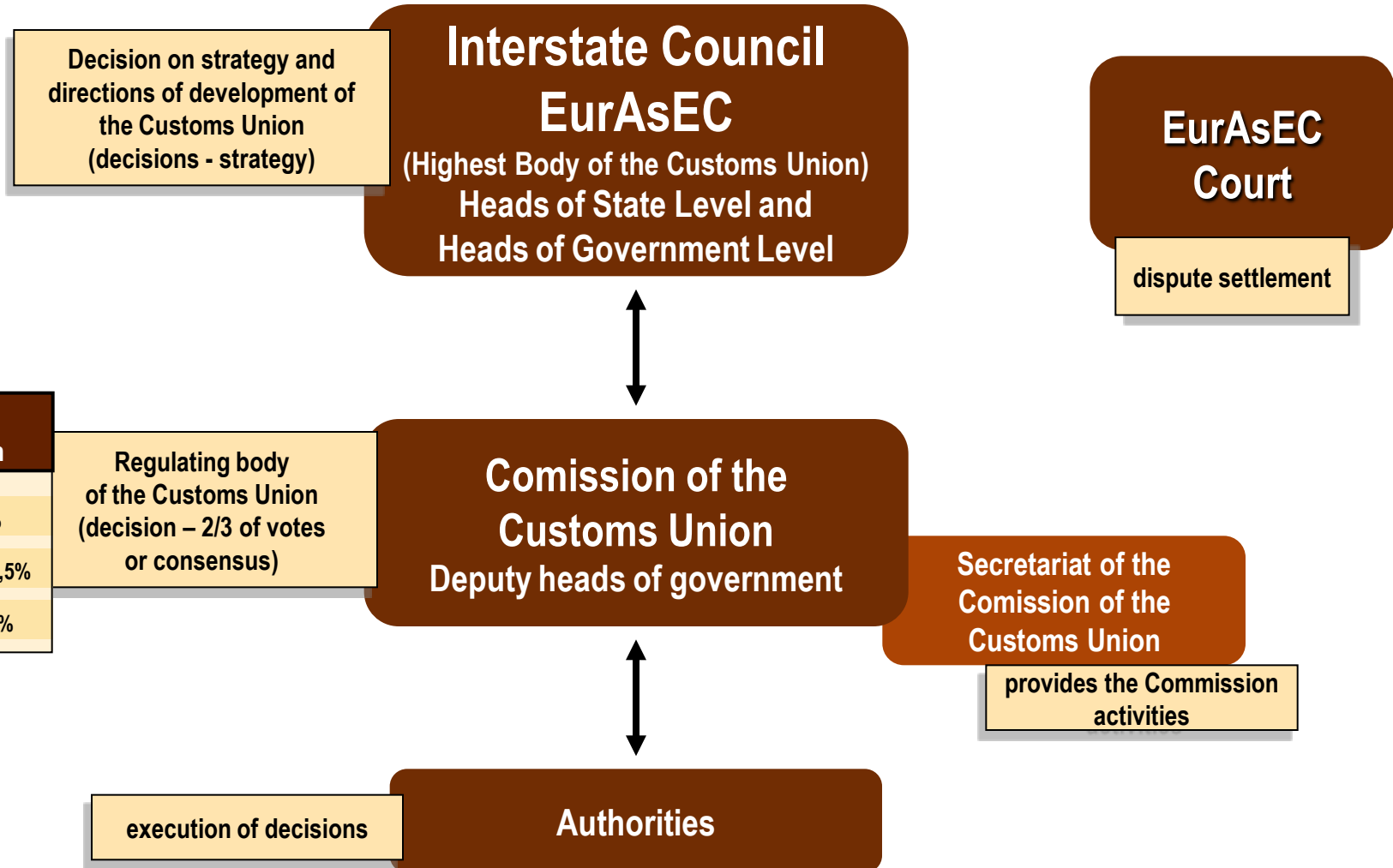
Decision Making Process in the Commission of the Customs Union



Common Customs Space Development Stages



Customs Union Administration System



EurAsEC integration development



Belarus



Kazakhstan



Kyrgyzstan



Russia



Tajikistan

Free trade regime

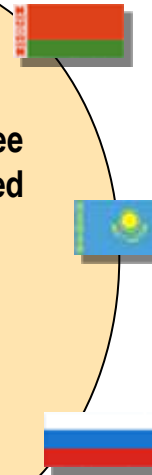
Customs Union

Common economic space

● abolition of customs duties and other restrictive measures concerning goods originating from the territory of the member-states of the Customs Union



● Establishing of Single Customs territory on which free movement is provided for goods either originating from its territory or imported from the third countries that have entered into free circulation



Free movement of:

- goods
- services
- capital
- labor



When all the formalities are completed



When all the formalities are completed



Establishing of the Customs Union

Implementation of the procedure of common trade with third countries

Bilateral Treaties with the third countries

Russia – 130

Kazakhstan – 50

Belarus – 40
(non-market status)

- Current trade procedures analysis
- Negotiations with the third countries

Common trade
procedures
of the
Customs Union



It is necessary to maintain the current trade procedures of Russian Federation with primary trade partners for the period before conclusion of new treaties on behalf of the CU

Establishing of Contractual and Legal Basis of the Customs Union

October 2007

- 4 treaties (Heads of State Level):**
- founding conditions and status of the CU;
 - Institutional structure of the CU;
 - EurAsEC joining procedure.

Entered into force

January 2008

- 9 treaties (Heads of Government Level):**
- establishment of common regulation of trade with the third countries;
 - customs administration unification;
 - transfer of authorities for foreign trade activity regulation to the CU.

Ratified
December 2008

December 2008

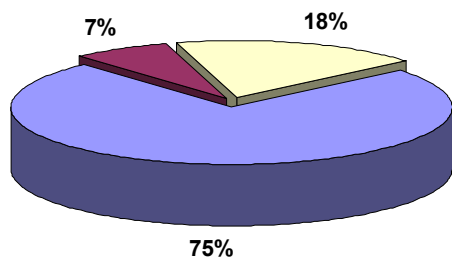
- 13 treaties (Heads of Government level):**
- customs-tariff treatment questions;
 - customs administration.

Ratified
December 2008

2009

- The continuation of the development of the legal basis, 15 treaties accepted, including:**
- Customs Code (accepted 27/11/2009);
 - on non-tariff regulation (2 treaties accepted 9/06/2009);
 - on technical regulation (accepted 11/12/2009);
 - on taxation issues (accepted 11/12/2009).

Common Customs Tariff



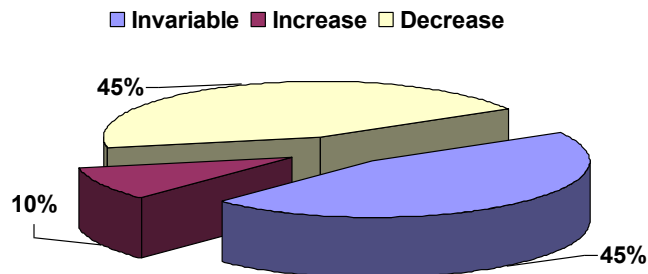
For Belarus

Increase:

- ▶ certain meat products
- ▶ finished preserved meat products
- ▶ certain positions for metals
- ▶ motor cars

Decrease:

- ▶ articles of apparel
- ▶ carpets
- ▶ footwear of leather and textile
- ▶ machinery and mechanical appliances
- ▶ pharmaceutical substances



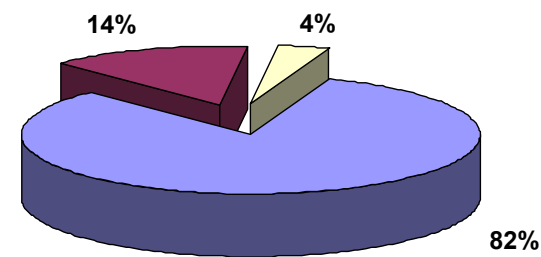
For Kazakhstan

Increase:

- ▶ group for means of transport (including vehicles)
- ▶ Wood
- ▶ refrigerating equipment
- ▶ pharmaceutical preparations
- ▶ electro-mechanical domestic appliances
- ▶ footwear and the articles of apparel

Decrease:

- ▶ several agricultural products
- ▶ hides and skins
- ▶ optical medical or surgical instruments and appliances



For Russia

Increase:

- ▶ certain meat products
- ▶ finished preserved meat products
- ▶ yeast
- ▶ certain articles of apparel and clothing accessories

Decrease:

- ▶ exotic fruit concentrates
- ▶ infant food
- ▶ materials for photography
- ▶ wool and fabrics
- ▶ pharmaceutical substances
- ▶ parts of footwear
- ▶ electro-mechanical appliances

The Customs Code of the Customs Union

Group of experts from Customs Services of Belarus, Kazakhstan and Russia

International convention on the simplification and harmonization of customs procedures (Kyoto convention)

Customs Code

- mutual administrative assistance
- common rules for goods declaration
- common customs procedures
- common methodology of customs value definition
- common rules of assessment and collection of customs duties
- common rules for customs control

November 2009



Acceptance of the Customs Code

January – May 2010



Amending the Legislation of the Member States of the Customs Union accordingly

1 July 2010



Carrying of the Customs Code of the Customs Union into effect